

## CHAPTER III

### METHODOLOGY

#### 3.1 Research Design

The design of the study is research and development (R & D) because the researcher develops grammar test through Macromedia Dreamweaver 8. The researcher develops Macromedia Dreamweaver of grammar test based on the curriculum, syllabus and needs. It is designed to be easier test and understandable.

This research is developed using *the research and development (R & D) methodology by Steven's ADDIE Model* :

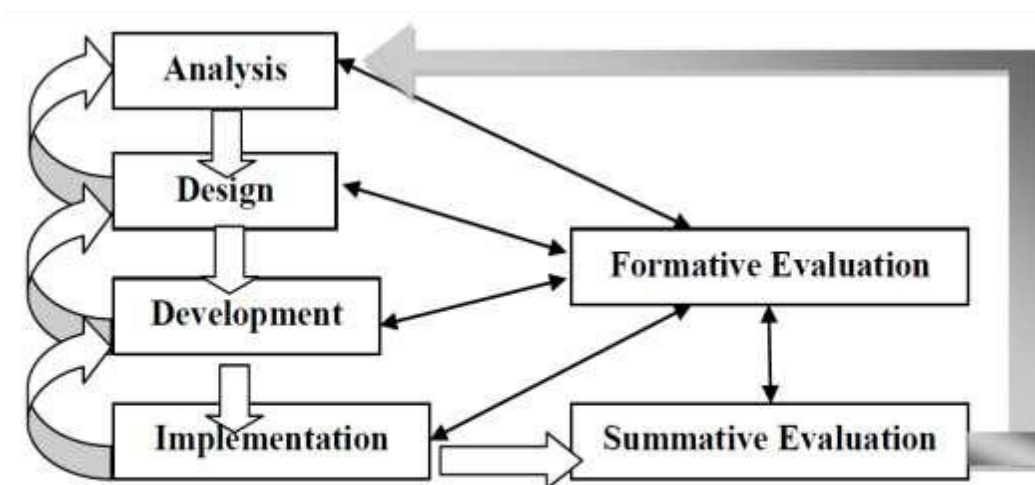
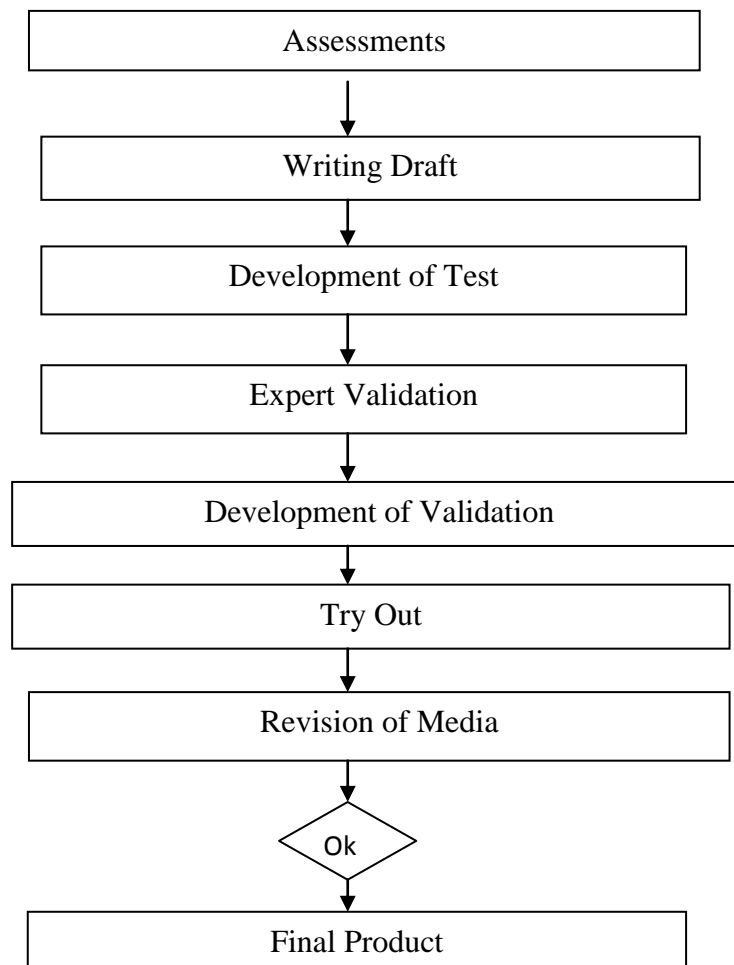


Figure 3.1 Steven J. McGriff's ADDIE Model  
([http://www.e-learningguru.com/articles/art2\\_1.htm](http://www.e-learningguru.com/articles/art2_1.htm))

The researcher thought that there should be some modification of Steven's ADDIE model, because the researcher needs an expert validation to measure the valid of the development product. The researcher needs an expert validation from

the expert researcher and teacher of the study. It is adapted by Dewi Aisya's ADDIE Model, 2011. The researcher also adapted from Dick and Carry model, because this is developing test and the researcher need to change need analysis with the assessment and also design with the writing draft. The modified steps that composed by the researcher are displayed in this chart:



### 3.2 Try out the Subject

Try out is conducted by the researcher for 9<sup>th</sup> grade students of Muhammadiyah 4 Giri. Researcher gives the try out in term of Macromedia Dreamweaver grammar test activities. Students will do the try out in form

Macromedia Dreamweaver format. Try out is the term to know whether the product need more development, addition, deleted or revision to be better.

### **3.3 Data Collection**

There are three data that the researcher has in this development data, the first data is the data which the researcher gets before developing the test, the second data is the data which the researcher has while the development is conducted and the third data is the data which the researcher has after try out the development test.

The researcher gets the first data before developing the test, the researcher interview the students with some questioners and get some authentic data from the teacher (syllabus and book use) to know the needs.

The second instrument is the checklist that given from the expert to measure the validation of development product. It is given when the developing of the test is conducted.

The third instruments to gather the data after development is students' test or try out score and questionnaire sheet. The test will be given to the 9<sup>th</sup> grade students of Muhammadiyah 4 Giri. The questioners will be given to the students after they do the test to measure how interesting the developing test is.

### **3.4 The Procedure of Developing Grammar test**

#### **3.4.1 Need Analysis**

The first step the researcher did the analysis by interviewing the teacher and did an authentic data observation to know the 9<sup>th</sup> grade students of Muhammadiyah 4 Giri need. It is the important thing to know before developing the test. There are 2 stages for need analysis; the first is to know the target needs and the second is learning needs to make the test suitable with the needs and aim of the study.

##### **3.4.1.1 Target needs**

Target needs are deal with the necessity, lack and wants (Hutchinson, 1987: 55). The researcher uses some questions to know the target needs. The questions are given to the teacher while the researchers do an interview and the students in a questionnaire form. The researcher also analyses the book that use to teach in SMP Muhammadiyah 4 Giri.

The researcher interviews the teacher who teaches English in SMP Muhammadiyah 4 Giri. The researcher gives some questions related to the material. The researcher also asks about the English abilities of the students and kinds of grammar test that are usually given to the students. The material in 9<sup>th</sup> grade taught is asked to know the suitable test that will be developed in this study. The researcher also asks about the media that used for teaching grammar.

After that the researcher gives the students some questioners for the students of SMP Muhammadiyah 4 Giri. There will be 15 questioners which

consist of target need and learning need questions, and the questioner are about the grammar test that they usually do.

The last the researcher analysis the syllabus and book use of the students. From the syllabus and book used the researcher could know what the students are thought. The researcher sees the SK and the KD. The researcher also sees book that is used by the teacher so the researcher could know the topic which is thought.

#### **3.4.1.2 Learning need**

Learning need is done by the researcher to know what the learners need to study, including learners' motivation to study, learner's motivation to do the test. The researcher will ask some questions to the students and the teacher to investigate learners' need.

The question is given to the teacher while the researchers do an interview and the students in a questionnaire form.

The researcher gives the students some questioners for 9<sup>th</sup> grade students of SMP Muhammadiyah 4 Giri . There will be 15 questioners which consist of target need and learning need questions and the questioner are about the grammar, how much they like grammar test.

#### **3.4.2 Design Instruction**

After getting the information about the need analysis, the researcher tries to develop the grammar test which is suitable with the learning needs, syllabus, and the curriculum.

The researcher will develop grammar test through Macromedia Dreamweaver 8 to make the grammar test more interesting.

The material will be designed like an electronic book, there will be some buttons and each button has its function. For the first there will be some choices of the material, students will choose one of the test that they are going to do and if the students click one of the choices it will connect to some exercises,. There will be some questions shown, the questions are multiple choices. Then they can try to answer the questions. There will be some explanations for each choice.

### **3.4.3 Developing Test**

The researcher develops the grammar test in form of grammar Macromedia Dreamweaver test. The Macromedia Dreamweaver will consist of several parts in term of some material that available in the syllabus. This media can connect to the internet, but if the students have the file they can use it without getting connected to the internet.

There will be 60 questions about grammar. They are present tense, past tense, perfect tense, modal, comparatives and superlatives. There will be 30 questions about present tense, past tense, and perfect tense. There will be 15 questions about modal auxiliaries and there will be 15 about comparatives and superlatives.

There will be also some explanations for each question. When students answers the questions by clicking the choices, it will be linked to some explanation. Whether the answer correct or incorrect.

### **3.4.4 Expert Validation**

After the developing grammar test has finished there will be an expert validation. The expert would get a checklist of courseware. There are two expert validations; the English teacher of the school and the lecturer of Developing Material in University of Muhammadiyah Gresik.

#### **3.4.5 Development of Validation**

Development of validation is done after the expert validation. It is about the scores, the comments, and also suggestions. It is done in other to make the product be better.

#### **3.4.6 Tryout of the test**

The tryout of the test is important to know the effectiveness of the product. The tryout of the product will be given to the students of SMP Muhammadiyah 4 Giri.

#### **3.4.7 Revision**

Revision will be done after the tryout of the test. The revision is done in order to make the Macromedia Dreamweaver completely can be use for the students.

#### **3.4.8 Final Product**

The final product of this reading test is Macromedia Dreamweaver test. And the final product will be done after the revision.

The material will be designed like an electronic book, there will be some buttons and each button has its functions. For the first there will be some reading texts and some multiple choice questions with some pictures, the students will try to answer the best questions and it will link to the new page and there will be some explanations whether the answer true or false over there.