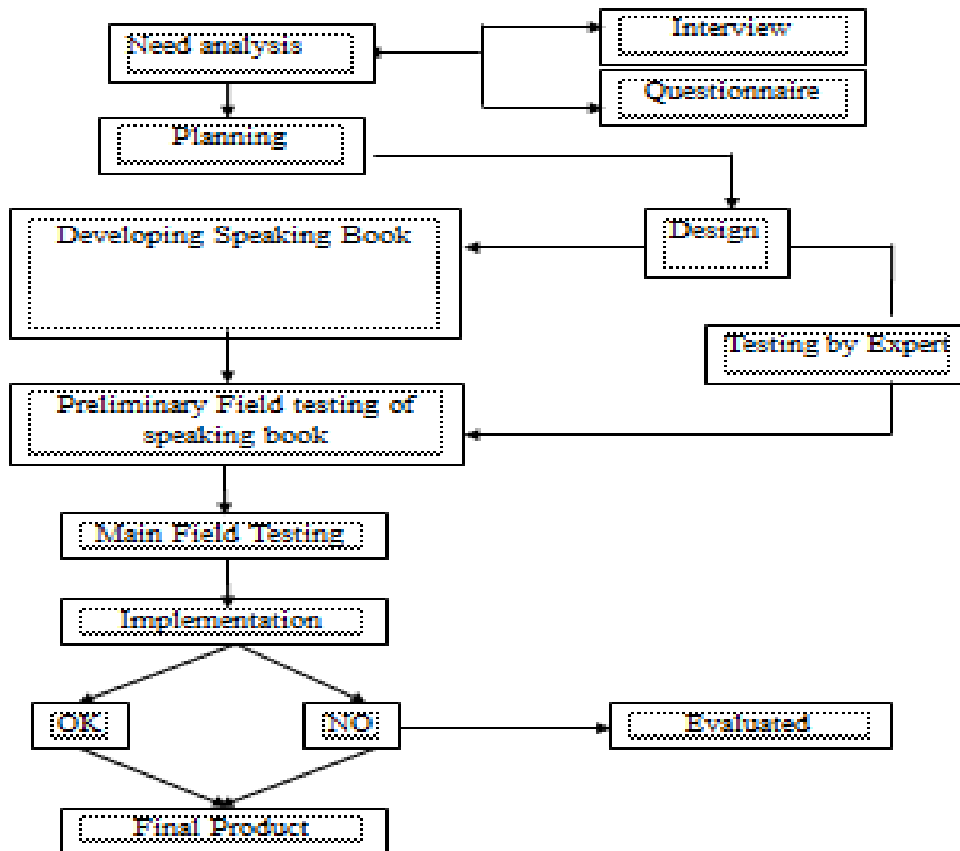


**CHAPTER III**  
**RESEARCH METHODOLOGY**

**3.1. Research Design**

The design of this paper is Research and Development; it means the researcher would like to develop the appropriate material which is used for automotive students at 10 grade in SMK Nurul Islam Pongangan Gresik. The appropriate here is refer to English material using ESA method for Automotive students based on learners' need.

In developing English module, the researcher uses Borg and Gall instruction and Candra Hadi Asmara (modified)



*Borg and Gall modified Design*